

give TO THE MAX   
Nov. 17, 2022

## Give to the Max

**Date:** November 1 - 17


Do you know what November 1 – 17th is? It's Give to the Max, where thousands of Minnesotans contribute to worthy local nonprofits. Please consider Reach for Resources as an organization to donate to.

Reach allocates an impressive 91 percent of funding to programming. Your dollars make a direct difference in the lives of many local families, children and adults.

**Plus, if you donate to Reach between November 1 - 17, your gift will be matched in memory of Mary Ellen and David Kaul!**

Donate Today

**STAY SAFE MN**



**VACCINE CLINIC**

**COVID-19 Booster &/or Flu Shot**

## Vaccine Clinic - Covid Booster & Flu Shot

**Date:** Wednesday, November 9, 2022

**Time:** 4:00 - 6:00 p.m.

**Ages:** 6 years & up

**Location:** Reach Office: 5900 Green Oak Dr., Suite 303, Minnetonka, MN 55343

Needing to get the latest COVID-19 booster and/or your flu shot? Both will be available at the Reach office on November 9th, free of charge or you can use your insurance. You do not need to make an appointment to attend.

**All participants will receive a \$25 Target gift card and a gift bag.**

This vaccine clinic is made possible by: [Hennepin County](#) and [Odum Medical Group](#).



## Reach Rest & Recharge Raffle

**Raffle Ticket:** \$20

**Drawing:** December 15, 2022 at 1pm

**Purchase Tickets:** Reach for Resources Office, [Sasquatch Saloon](#), [Capra's Sporting Goods](#), [Plow World Power Equipment](#), [Nelson's Meats](#), [Gold Meadows Hunting Preserve](#), [Sand Pine Pheasants](#), by contacting Jason Skoog ([jskoog@reachforresources.org](mailto:jskoog@reachforresources.org) or 952-564-8680) or online using a debt card.

**Grand Prize (1):** 7-Day\* Resort Stay for Two (MSRP \$1,500). Choose from over 3,000 destinations worldwide! [Click here](#) to view all of the destinations.

**Add'l Prizes (4):** VIP Event Tickets for Two (MSRP \$120). Choose from sports, concert & event tickets.

**Add'l Prize (1):** Golf or Spa Day for Two (MSRP \$100). Choose from a variety of golf courses & spas.

**You do NOT need to be present to win.**

Purchase Raffle Tickets



## 2023 Bowl-A-Thon

**Date:** Saturday, April 22

**Time:** 10:00 a.m. - 1:00 p.m.

**Location:** Park Tavern; 3401 Louisiana Ave S, St. Louis Park

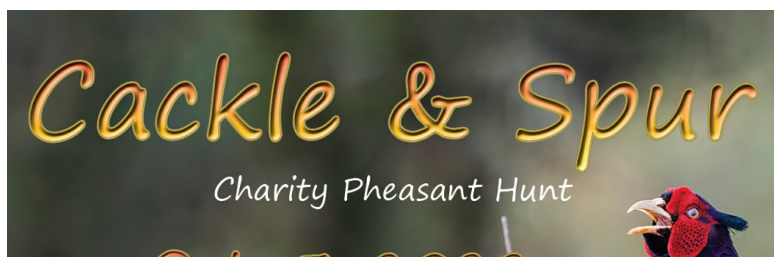
**Fee:** \$40 by March 1; \$50 after March 1

Join us for our 31st annual bowling FUNdraiser! Collect pledges and then join us for two games of bowling, pizza, good music and prizes. Don't miss this great opportunity to spend the day having fun with your friends while supporting Reach. All ages and abilities welcomed!

Register to Bowl

Pledge Form

Sponsor a Bowler





## Cackle & Spur Raises nearly \$50,000!

Thank you to everyone who came out to support our Cackle & Spur Charity Pheasant Hunt on October 5th! This year, we had hunters from South Dakota, Wisconsin, Arizona, Florida, Alaska and two groups from near Ely!

Because of your generosity and support, we were able to raise nearly \$50,000! From everyone at Reach, THANK YOU!

We would like to extended a thank you to all of the volunteers and two photographers/videographers: Josh Zenner and Leroy Haflund.

To view the photos visit: [reachforresources.org/events/cackle-and-spur](https://reachforresources.org/events/cackle-and-spur)

Thank you to all of the businesses who donated raffle & silent auction items: [Hoffman Weber Construction](#), Dan Berger, [Carlson's Ace Hardware](#), [JD's Salsa](#), [Dr. Duck](#), [Ruff Land Kennels](#), [Vortex Optics](#), [Pizza Barn](#), [Split Rock Coffee](#), [The Pet Hopper](#), [GSI Outdoors](#), [Geiger's Trails End](#), [Life of Riley Resort](#), [NutriSource](#), [SportDOG](#), [Federal Premium Ammunition](#), [Reeds Family Outdoor Outfitters](#), [Cutco](#), [Big Frig](#), [Jager Outdoors](#) and [Wildlife Research Center](#).

Thank you to our event sponsors:



**Hampe Family  
Foundation**

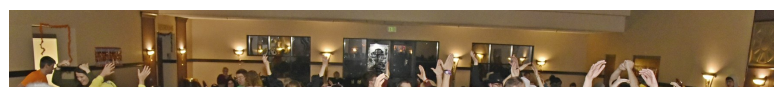


## Thank you for attending Bingo & Brews!

Thank you to everyone who attended our Bingo & Brews event on October 10th! It was a fun night of Bingo, brews and prizes.

We are excited to see everyone at our next Bingo & Brews event in early 2023. More details to come soon!

Thank you to our event sponsors:







## Ghostly Gala was a Howlin' Good Time!

Thank you to everyone who attended our Ghostly Gala on October 28th. It was a fun filled night of games, creative costumes, yummy pizza, dancing and great music!

We look forward to seeing everyone next year!

To view the event photos, visit: [reachforresources.org/GG](https://reachforresources.org/GG)

Thank you to our Ghostly Gala photographers: [Michelle Dawn Photography](#) and [JZ Productions](#).

Thank you to our event sponsors:

Piper Garmon



## Fall Reach Reader & Program Sign Up

There is still time to sign-up for our Fall Adaptive Rec programs. Fall programs run through the end of December.

[Click here](#) to register for fall programs.

[Download/View Fall Reach Reader](#)





## Individual Counseling

We have immediate openings for in-person and telehealth individual counseling. Our counseling team specializes in abuse & trauma, chronic pain, depression, grief & loss, health issues, life transitions, cognitive & physical disabilities and many other therapeutic topics.

If you are interested in receiving counseling services, please complete the [Counseling Referral Form](#) and submit it to: [counseling@reachforresources.org](mailto:counseling@reachforresources.org) or via fax 952-479-9393.

[Learn More](#)



## AmazonSmile

Shopping for Holiday gifts on Amazon? As you shop, you can help Reach free of charge. Before shopping, login to AmazonSmile and chose Reach for Resources as your charity of choice. Amazon will donate a percentage of your purchases to helping support our mission.

- Visit [smile.amazon.com](https://smile.amazon.com) and sign into your Amazon account
- Select Reach for Resources as your charitable organization

You can also support Reach though the AmazonSmile Charity Lists. This is an easy way to shop and donate items directly to Reach. To see the items on our list, visit: <https://amzn.to/3ML4rdT> or view our list on the Amazon mobile app. Thank you for your continued support!

[AmazonSmile](#)

[Amazon Wish List](#)



## Winter Reach Reader & Program Sign Up

The Winter Reach Reader is available online and program registration is

open! This winter we will be offering in-person and virtual adaptive recreation programs. Check out some of our new programs including: Monday Funday Group, Nature-Based Teen Explorers, boundary workshops (free), cooking nights and seasonal themed crafts.

[Click here](#) to register for winter programs.

Download/View Winter Reach Reader



## Join our Team!

Come work or volunteer for us and make a difference in the lives of others. At Reach, we have a variety of ways for you to get involved.

**Full & Part-Time Employment** [Current Openings >](#)

**Internship Positions** [Current Openings >](#)

**Volunteer Opportunities** [Learn More >](#)

To learn more about our company culture and benefits, [click here](#).



## Upcoming Programs

- Young Athletes - 11/1
- WNS: Fall Bingo & Treat - 11/2
- Dance Workout - 11/4
- OTT: Music Video Request Night - 11/10
- OTTA: Hot Chocolate & Games - 11/11
- Craft: Wooden Snowmen - 11/15
- Bingo - 11/18
- Graham Cracker Houses - 12/1

November Calendar

Donate to Reach



**Mailing address:**

5900 Green Oak Dr., Suite 303, Minnetonka, MN 55343