

Visit The Vine Room
in Hopkins this May as
proceeds support Reach's
mental health services!

Join us at the Reach Golf
Tournament, July 14.
Learn more:
reachforresources.org/golf

Swing by PoppedCorn in
Minnetonka to grab a 40 Years
of Reach popcorn tin, packed
with their delicious Vegas mix!

Empowering people of all-abilities to reach their full potential.

Summer 2025

Reach Reader



2025 ANNUAL REACH AWARD WINNERS



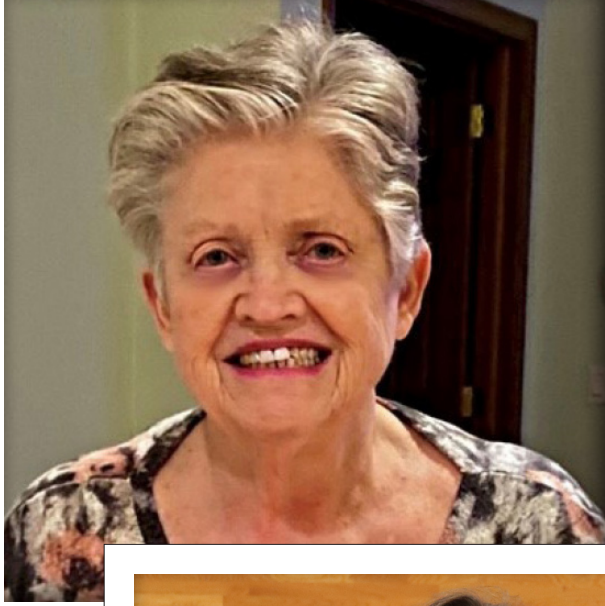
Core Value Champion of the Year: Cassie Keller

Throughout her time at Reach, Cassie Keller has consistently demonstrated her dedication to our core values. From her roles as a Community Living Specialist to her current position as Director of Community Living, she continually asks, "What can we do to make this better?"—ensuring we provide the best possible support and services.

Cassie's contributions are both numerous and impactful. She has developed training materials, provided unwavering support to staff, re-examined practices, guided us through DHS policy changes, and even brought joy to events like the Bowl-A-Thon. She fosters a culture of collaboration, growth, and inclusivity, ensuring that everyone feels heard, valued, and empowered.

Congratulations, Cassie, on this well-deserved award! Your leadership and dedication continue to make a lasting impact, and we're excited to see all that you accomplish moving forward. (Continued on page 2)

2025 ANNUAL REACH AWARD WINNERS



Impact Supporter of the Year: Jan Sanner

Jan Sanner, mother of two and former Reach for Resources board member, has been a dedicated supporter of Reach for many years. She first discovered Reach while seeking inclusive activities for her son, Craig, who has since thrived in programs like adaptive sports, dances, and community events. Inspired by the positive impact on Craig, Jan and her husband became committed donors, helping expand opportunities for individuals with disabilities and mental health conditions. Her long-standing philanthropy ensures others can experience the same joy, confidence, and connection as her children, and she encourages others to support Reach's mission of creating an inclusive community for all.



Reach Star of the Year: Emily Reimer

In 2024, Emily took part in an incredible 90 Adaptive Recreation programs with Reach! With her bright smile and friendly personality, she's always bringing people together and making every event and program more enjoyable. Beyond recreation, Emily is a passionate self-advocate, serving on our advocacy committee to help create positive change in the community. Her dedication to both fun and inclusion is truly inspiring. Congratulations, Emily, on this well-deserved recognition!



Volunteer of the Year: David Brown

David Brown has dedicated over 200 hours to supporting the Finance and Administration teams since joining Reach in December 2023. As a CPA nearing retirement, he saw volunteering as a meaningful way to give back, especially with a personal connection to Reach through his nephew. David's expertise has been invaluable in easing the administrative workload, and he's also an active participant in community events like the Reach Golf Tournament. Beyond his contributions, he's found a welcoming community that has supported him in return. Thank you, David, for your dedication and generosity!

TEE OFF FOR A GREAT CAUSE!

Grab your clubs and friends, it's time to hit the greens for Reach's annual Golf Tournament at The Wilds Golf Club! Whether you're a seasoned pro or just in it to enjoy the day, this 18-hole, 4-person team scramble is all about good times, great company, and making a difference.

Expect exclusive games, a silent auction, and a raffle packed with awesome prizes.

Monday, July 14 | 11:30 a.m. Shotgun Start | 10:30-11:00 a.m. Check-In

The Wilds Golf Club

3151 Wilds Ridge Court, Prior Lake, MN 55372

All proceeds from the event go directly toward funding Reach's In-Home Services and Housing Supports.

Registration includes 18 holes of golf, cart, green fees, boxed lunch, and entry to the 19th Hole Party (dinner, prizes & awards).

Early Bird Pricing (valid until June 1):

\$175 per individual, or \$675 per team of 4.

Pricing After June 1:

\$200 per individual, or \$725 per team of 4.

Register by June 30, 2025

Learn more & register online!
reachforresources.org/golf



Scan Me!



4TH ANNUAL GOLF TOURNAMENT

Support Mental Health at a Minnesota Twins Game!

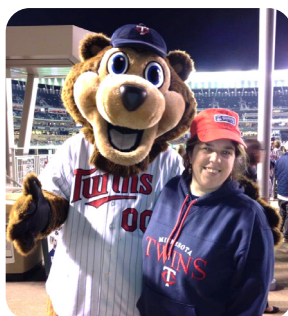
Tuesday, May 20

MN Twins vs Cleveland Guardians | 6:40 p.m.

Target Field | 1 Twins Way, Minneapolis

Tickets: \$59 - \$20 (includes all fees) - purchase by May 4

Join us at the ballpark to bring awareness to the importance of mental health! Cheer on the Twins as they take on the Guardians and help us honor four decades of empowering individuals through our mental health services.



Event Highlights:

- Recognition of mental health initiatives during the game
- Reach will be throwing out the first pitch
- Opportunities to connect with Reach staff and supporters

Tickets are limited — grab yours today!

Purchase Tickets:

reachforresources.org/TwinsGame

Group seating available
in sections 126 & 331



Struggling with anxiety, depression, life transitions, or relationship challenges?

Our compassionate therapists are here to help, with immediate openings available! Take the first step toward balance, resilience, and a brighter future today.

Coming Summer 2025: Our Mental Health Support Group will offer a welcoming space for connection and healing. If you're interested, fill out our support group interest form at reachforresources.org/therapy.

For more information:

therapy@reachforresources.org | 952-256-6734

reachforresources.org/therapy

We're here to support you!





**Scan this QR code to
access and complete the
form if you're interested!**

JOIN REACH FOR RESOURCES' ADVISORY BOARD!

Are you or a loved one impacted by Reach for Resources? Your voice matters! We're forming an Advisory Board to ensure that the people we serve, and their families, help shape the future of our programs.

This group will meet three times a year, for one hour each session, to provide feedback, discuss improvements, and share insights on what's working and what could be better. Your input will directly influence how we grow and continue to provide meaningful, person-centered support.

Led by Emily Orr, with support from other Reach staff, this is a fantastic opportunity to make a difference in the services that impact you and your community.

Interested or have questions? Contact Emily!
eorr@reachforresources.org | 612-916-4021

THANK YOU FOR YOUR SUPPORT!

Thanks for Rolling with Us at the



Thank you to everyone who joined us at AMF Southtown Lanes for a fantastic day of strikes, prizes, laughter, and pizza! Your enthusiasm and support, whether raising pledges, cheering on bowlers, or simply enjoying the fun, truly made a difference. Together, we raised over \$13,000 for our adaptive recreation and transportation programs!

Special thanks to our amazing volunteers **and a heartfelt thank you to our sponsors, the Bottiger, Thompson, and Veith families, for their generous support.**

We're grateful for this incredible community and can't wait to see you back on the lanes next year!

Relive the fun: reachforresources.org/BAT

Thanks for Joining Us at Bingo & Brews!

We're so grateful to everyone who joined us for a fantastic night of bingo, brews, and community! Your support, whether by playing a round, grabbing some Reach gear, or simply sharing in the fun, made an impact.

A huge thank you to LTD Brewing for sponsoring this event and helping us bring people together for a great cause! We also want to extend a big thanks to our wonderful volunteers for all their help. We hope you had a blast, took home some awesome prizes, and made lasting memories with friends.

Your enthusiasm and generosity mean the world to us, and we're so fortunate to have such an incredible community. We can't wait to see you at our next event!



Reach for Resources Board Of Directors

David Erickson, Chair
HealthPartners & Stub Enterprises, Inc.

Janet Rebman Lillevold, Deputy Chair
Rebman Lillevold Consulting

Peter Kanda, Treasurer
College Possible

Tanner Schafer, Secretary
Streams Bank

Patrick Boley
Eckberg Lammers, P.C.

Dandy Leizens
Boston Scientific

Peter N. Thompson
Retired Law Professor

Kim Pepper
b.e.cause consulting LLC

ADAPTIVE RECREATION PROGRAMS

AM I A "RESIDENT"?

Our adaptive recreation program is a cooperative effort with these cities:

- Brooklyn Center
- Brooklyn Park
- Chanhassen
- Edina
- Golden Valley
- Inver Grove Heights
- Maple Grove
- Plymouth
- St. Louis Park

If you live in another city, please pay the non-resident fee upon registration.

For more information, call 952-393-5880 or visit: reachforresources.org.

All programs are pre-registration only. Registration for a program is required at least 3 days before the start date unless otherwise noted.

EASY ONLINE REGISTRATION!

We have an online sign-up software that makes it easier than ever to find and register for programs. This software allows you to create an account, view your invoices and download a calendar with all your upcoming programs.

Sign-up for an account:
reach.recdesk.com

PROGRAM DETAILS

For 2025, we will be offering a variety of programs including different billable options.



Trail Rides

Trail by Reach transportation available for program



Virtual Programs

Virtual via: Teams or Zoom



In-Person Programs

Variety of locations
Masks are welcome but not required for indoor programs



Waiver Eligible* Program

Program billable via ILS Therapies on DD or CADI waivers
Contact Sally Krull to learn more

** Almost all of our programs can be billed through CDCS waivers. Contact Sally Krull to learn more.*

INCLUSION SUPPORT

Reach offers inclusion support to children and adults with disabilities who wish to participate in their city's park and recreation programs. To register, please contact your local park and recreation department. Inclusion support through Reach is available in the following cities:

- Brooklyn Center
- Brooklyn Park
- Chanhassen
- Chaska
- Crystal
- Edina
- Golden Valley
- Inver Grove Heights
- Little Canada
- New Hope
- Plymouth
- Roseville
- St. Louis Park
- Three Rivers Park District
- Woodbury

To learn more, visit: reachforresources.org/inclusion.

Once you have registered for a city park program, please contact Reach at inclusion@reachforresources.org to discuss any needs or accommodations for yourself or your child.

Please allow a minimum of two weeks notice for a successful inclusion.

CONTACT INFORMATION

Have a question or concern about a program or need additional information?
Please reach out to our Adaptive Recreation & Inclusion Department.



Sally Krull, MA, CTRS

Director of Adaptive Recreation & Inclusion

Email:
skrull@reachforresources.org

Call or Text:
952-393-5880



Brienna Max

Assistant Director of Adaptive Recreation & Inclusion

Email:
bmax@reachforresources.org

Call or Text:
952-393-4277

PROGRAM POLICIES & PROCEDURES

REGISTRATION

- All participants must be registered for a program to attend. Friends, housemates, etc. cannot attend with a registered participant without obtaining special permission from the Reach Recreation Department. If the activities are held at a community center, there are often common spaces where others can wait.
- Registrations are accepted online, in person, or by mail. Registrations are not taken at programs or over the phone.
- Register at least two weeks before the beginning of a program. Some programs do fill up, and you may be placed on a waiting list if the program is full.
- If you register for a recurring program after it has started, Reach will welcome you to join and prorate the registration fee as long as there is space in the program.
- Online registration closes three days before each program.

REGISTRATION CONFIRMATION

- Registration confirmations will be sent to the email used during registration or the email provided on the email form.

PAYMENT METHODS

- Reach accepts all major credit cards, cash, checks and money orders.
- CDCS waivers can be billed with guardian approval and proper paperwork.
- Traditional waivers are only accepted for ILS therapy programs (Art Therapy and Rec Therapy).

PROGRAM & CLASS CANCELLATIONS

- While rare, Reach reserves the right to cancel a program due to circumstances beyond our control including severe weather or due to a lack of staff and/or participants.

PROGRAM WITHDRAWAL

- Participants who call or email to withdraw from an activity at least two weeks before the activity are eligible to receive a refund. A \$5 cancellation fee will be charged per class. Refunds are not awarded with less than 2 weeks' notice or for ticketed events.
- There are no refunds for a missed program or class.
- ILS therapy classes abide by a separate cancellation policy.

STAFF RATIOS / SUPPORT STAFF / CAREGIVERS

- Caregivers, family & support staff can attend any programs except for Independent Adult Programs.
- Staff ratios are different for each program. If a participant requires more assistance than a program offers, please provide that support by sending along a caregiver.
- Reach staff is unable to spend a lot of 1:1 time with participants. Individuals who need 1:1 support should always have support staff with them at programs.

ARRIVING EARLY OR LATE

- Reach cannot be responsible for participants who arrive early or depart late from the scheduled program times. All participants who arrive early to a program must wait in the lobby or near the front entrance until the scheduled program time.

LATE PICKUP FEE

- If a participant is not picked up immediately after the end of a program, a \$10 fee will be billed for every 15 minutes after the scheduled program ending time.

ATTIRE

- Participants in art and cooking classes should dress in old clothing and/or bring a paint shirt or apron. Reach will not be responsible for clothing that is damaged.

MEDICATIONS

- Medications, prescription, and non-prescription drugs are the sole responsibility of the participant. At no time can a Reach staff assume responsibility for or administer medications in any form.
- Reach staff can assist with lifesaving procedures (ex: EpiPen®) as long as staff are made aware of the potential need for this procedure & provided with the necessary supplies.

ILLNESS / INJURY

- If a participant becomes ill or injured, staff will contact the emergency contact immediately. If the emergency contact can't be reached, staff will contact medical personnel.

INFECTION CONTROL

- To minimize exposure to other participants and staff, participants are requested to stay home if they have the following symptoms/diagnoses:
- Covid-19. If you are diagnosed with Covid-19 or suspect you may have Covid-19 please follow CDC guidelines for quarantine and isolation.
- An upper respiratory infection such as bronchiolitis or influenza.
- Fever of 100 degrees Fahrenheit or over within the past 24 hours. Individuals must be fever-free WITHOUT the use of Tylenol or other fever-reducers for at least 24 hours.
- Vomiting or diarrhea within the past 24 hours.
- Head lice or pink-eye (must be on eye-drops for at least 24 hours before attending).
- Strep-throat or any other illness that requires antibiotics. Individuals must be on antibiotics for at least 24 hours before attending a program.

ALL PROGRAM & PROCEDURES

To read all of our Adaptive Recreation & Inclusion procedures, please visit: <https://bit.ly/AdaptiveRecPolicies>



COOKING & CRAFTS

COOKING NIGHT: SUMMER SALADS



Fresh, flavorful, and fun! Join us for a delicious evening of making and tasting refreshing summer salads. Perfect for warm weather and great company.

DAYS	DATE	TIME
Fri.	6/6	5:30-7:00 p.m.
Location	Robbinsdale Cooper High School: FACS Room; 8230 47th Ave. N New Hope, MN 55428	
Age	16+	
FEE	\$25 resident / \$27 non-resident	



COOKING NIGHT: CHEESEBURGER TATOR TOT HOTDISH



Comfort food at its best! Learn how to make this cheesy, savory, and satisfying dish that's sure to be a crowd-pleaser.

DAYS	DATE	TIME
Mon.	8/18	5:30-7:00 p.m.
Location	Robbinsdale Cooper High School: FACS Room; 8230 47th Ave. N New Hope, MN 55428	
Age	16+	
FEE	\$25 resident / \$27 non-resident	

CRAFT: WATER GUN PAINTING



Get creative with a splash! Use water guns filled with paint to create a unique and colorful masterpiece. A fun and playful way to make art.

DAYS	DATE	TIME
Thu.	7/10	6:30-8:00 p.m.
Location	St. Louis Park Rec Center: Gallery Room; 3700 Monterey Dr. St. Louis Park, MN 55416	
Age	16+	
FEE	\$15 resident / \$17 non-resident / \$10 companion	

CRAFT: SHARPIE MUGS



Design your own custom mug using Sharpies. A fun and easy way to personalize your morning coffee or tea.

DAYS	DATE	TIME
Tue.	6/10	6:00-7:30 p.m.
Location	Chanhassen Community Center: Community Room 4; 2310 Coulter Blvd. Chanhassen, MN 55317	
Age	16+	
FEE	\$15 resident / \$17 non-resident / \$10 companion	



CRAFT: GALAXY JAR



Create your own out-of-this-world galaxy jar. Layer vibrant colors and glitter for a mesmerizing, space-inspired decoration.

DAYS	DATE	TIME
Fri.	8/8	6:30-8:00 p.m.
Location	St. Louis Park Rec Center: Gallery Room; 3700 Monterey Dr. St. Louis Park, MN 55416	
Age	16+	
FEE	\$18 resident / \$20 non-resident / \$13 companion	



ART ABILITIES



This series of workshops invites you to explore your creative interests beginning with warm-up exercises, followed by painting, drawing, journaling, and other abstract creations to help you learn a different method of communication. This activity is made possible through a generous grant.

DAYS	DATE	TIME
Thu.	7/10-8/15	7:00-8:30 p.m.
Location	Brooklyn Center Community Center: Arts & Crafts Room; 6301 Shingle Creek Pkwy. Brooklyn Center, MN 55430	
Age	14+	
FEE	Free	

SPORTS & RECREATION

BOWLING LEAGUE



Join our non-competitive bowling league, which provides a fun and inclusive environment. Registration includes two games of bowling per week and shoes.

DAYS	DATE	TIME
Tue.	6/17-8/12	6:00-8:00 p.m.
Location	Park Tavern; 3401 Louisiana Ave. S St. Louis Park, MN 55426	
Age	All Ages	
FEE	\$84 resident / \$93 non-resident	



BOCCE LEAGUE



This non-competitive league is a fun and laid-back gathering for players of all skill levels. Have fun with your friends while improving your bocce skills and socializing in a relaxed atmosphere.

DAYS	DATE	TIME
TBD	TBD	TBD
Location	TBD	
Age	16+	
FEE	\$32 resident / \$36 non-resident	

ACCESSIBLE SOFTBALL LEAGUE



With a focus on teamwork, sportsmanship, and having fun, our league offers a relaxed and supportive atmosphere for players to play and make new friends. All skill levels are welcome. Team jerseys are included!

DAYS	DATE	TIME
TBD	TBD	TBD
Location	TBD	
Age	16+	
FEE	\$48 resident / \$56 non-resident	

NON-COMPETITIVE SOCCER



Come learn some ball skills and scrimmage with friends. All abilities are welcome.

DAYS	DATE	TIME
TBD	TBD	TBD
Location	TBD	
Age	16+	
FEE	\$48 resident / \$56 non-resident	



LET'S GO FISHING



We can't schedule these outings quite yet, but we are partnering with Let's go Fishing for a few opportunities to get out on the lake and catch fish this summer! Register to be contacted via email when these opportunities open up. You'll have the opportunity to select dates and pay once details are finalized.

DAYS	DATE	TIME
TBD	TBD	TBD
Location	Riley Lake: Public Boat Landing; 9180 Riley Lake Rd. Eden Prairie, MN 55347	
Age	16+	
FEE	\$10 resident / \$11 non-resident	



MN TWINS GAME



Join a large group of friends to watch the MN Twins take on the Cleveland Guardians! Please note any accessibility needs when registering. Companions MUST register to attend.

DAYS	DATE	TIME
Tue.	5/20	6:40-9:30 p.m.
Location	Target Field; 1 Twins Way Minneapolis, MN 55403	
Age	All Ages	
FEE	\$26	

GAMES & MOVIES



SNACKS & CINEMA



Join us for a fun movie night featuring a hilarious romantic comedy starring Sandra Bullock and Ryan Reynolds. Sit back, relax, and enjoy this feel-good film with tasty snacks and great company!

Runtime: 1h 48m

THE PROPOSAL (PG-13)

DAYS	DATE	TIME
Thu.	8/14	6:00-8:30 p.m.
Location	Brooklyn Park Community Activity Center: Grand Room 1; 5600 85th Ave. N Brooklyn Park, MN 55443	
Age	13+	
FEE	\$10	



BINGO



Enjoy a fun and exciting gathering where players can test their luck and compete for prizes while enjoying the company of others. We strive to make everyone a winner. Light snacks are provided.

DAYS	DATE	TIME
Mon.	6/9	6:30-8:00 p.m.
Location	Brookview Community Center: Valley Rooms North & South; 316 Brookview Pkwy. S Golden Valley, MN 55426	
Age	13+	
FEE	\$10	

DAYS	DATE	TIME
Mon.	7/21	6:30-8:00 p.m.
Location	Brookview Community Center: Valley Rooms North & South; 316 Brookview Pkwy. S Golden Valley, MN 55426	
Age	13+	
FEE	\$10	



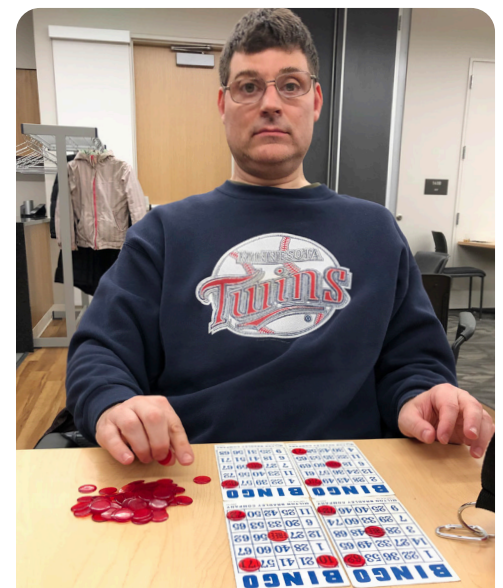
BINGO & PIZZA



Bingo & Pizza night is a fun and casual event that combines two beloved pastimes. Guests can enjoy delicious pizza while playing a variety of bingo games with chances to win prizes and enjoy friendly competition with friends. *Companions only need to register if they want to eat pizza.*

DAYS	DATE	TIME
Mon.	6/30	5:45-7:30 p.m.
Location	Centennial Lakes Park: Hughes Pavilion; 7499 France Ave. S Edina, MN 55424	
Age	13+	
FEE	\$18 resident / \$20 non-resident / \$9 companion	

DAYS	DATE	TIME
Thu.	8/21	5:45-7:30 p.m.
Location	Chanhassen Rec Center: Minnewashta Room; 2310 Coulter Blvd. Chanhassen, MN 55317	
Age	13+	
FEE	\$18 resident / \$20 non-resident / \$9 Companion	



SOCIAL ACTIVITIES

BOWLING BANQUET

All bowlers from our 2024-25 seasons are invited to attend this party. Enjoy dinner as we give out certificates and prizes to all of our bowlers from the past year. We'll watch a photo slideshow from the year and enjoy dancing to wrap up the night. *Please register two weeks in advance. Companions only need to register if they would like dinner.*

DAYS	DATE	TIME
Tue.	8/26	5:30-7:00 p.m.
Location	Minnetonka Community Center: Banquet Room; 14600 Minnetonka Blvd. Minnetonka, MN 55345	
Age	All Ages	
FEE	\$21 resident / \$23 non-resident / \$14 companion	



HIKING CLUB

Join us for a weekly accessible hike where we can talk, do scavenger hunts, and play games as we go.

DAYS	DATE	TIME
Tue.	8/5-8/26	2:30-3:30 p.m.
Location	Westwood Hills Nature Center; 8300 W Franklin Ave. St. Louis Park, MN 55426	
Age	18+	
FEE	\$36 resident / \$40 non-resident	



SOCIAL SEEKERS

This program is for teens and adults on the Autism spectrum. We meet once a week for fun and social interaction. We play games, solve riddles, and enjoy working through our weekly highs and lows together. It is a welcoming space to build friendships, practice social skills, and share in a supportive community. Call 952-393-4277 for more information or to schedule an intake meeting.

DAYS	DATE	TIME
Thu.	6/26-8/21	5:00-6:30 p.m.
Location	Reach for Resources; 5900 Green Oak Dr., Suite 303 Minnetonka, MN 55343	
Age	16+	
FEE	\$200 resident / \$210 non-resident	

KARAOKE & MOCKTAILS

Choose your favorite music and sing your heart out while enjoying delicious, alcohol-free cocktails.

DAYS	DATE	TIME
Mon.	8/11	6:30-8:00 p.m.
Location	St. Louis Park Rec Center: Gallery Room; 3700 Monterey Dr. St. Louis Park, MN 55416	
Age	18+	
FEE	\$10 resident / \$11 non-resident	

NEON GLOW DANCE

Get ready to light up the night! Join us for an electrifying Neon Glow Dance, where the music is loud, the vibes are bright, and the fun never stops. Wear your best neon or white attire, enjoy a night filled with glowing fun, great music, dancing, and good company.

DAYS	DATE	TIME
Thu.	6/19	6:00-8:00 p.m.
Location	St. Louis Park Rec Center: Gallery Room; 3700 Monterey Dr. St. Louis Park, MN 55416	
Age	13+	
FEE	\$10	



TEEN EXPLORERS

Our Teen Explorers group aims to build social skills, as well as engagement in our community and the natural world. This program is open to individuals of all abilities and participants can bring a staff or caregiver if additional support is needed.

Age: 13-22

TE1: BIRDHOUSES



Get creative by building a birdhouse and dive into the fascinating world of birds.

DAYS	DATE	TIME
Mon.	6/16	4:45-6:15 p.m.
Location	Reach for Resources; 5900 Green Oak Dr., Suite 303 Minnetonka, MN 55343	
Age	13-22	
FEE	\$15 resident / \$17 non-resident	

TE2: DINING AT PERKINS



Enjoy a flavorful adventure with friends—bring \$15–\$25 to order off the menu!

DAYS	DATE	TIME
Thu.	7/17	4:45-6:15 p.m.
Location	Perkins American Food Co.; 6920 Wayzata Blvd. Golden Valley, MN 55426	
Age	13-22	
FEE	\$10 resident / \$11 non-resident	

TE3: FISHING



Cast a line, reel in a catch, and relax by the water in nature's serenity.

DAYS	DATE	TIME
Wed.	8/20	4:45-6:15 p.m.
Location	Fish Lake Regional Park; 14900 Bass Lake Rd. Maple Grove, MN 55311	
Age	13-22	
FEE	\$10 resident / \$11 non-resident	

INDEPENDENT ADULT PROGRAMS

This independent social program is for adults and young adults who want to explore their community with minimal support. This program is offered at a 1:15 staff ratio and companions cannot attend the programs. **A brief intake is required. If you have not had an intake in the last five years, you must schedule one before registering.** To schedule an intake, please email bmax@reachforresources.org or call 952-393-4277.

Age: 18+

IAP1: POKEMON GO



Catch 'em all at Mall of America! Join us for a Pokémon GO adventure—explore, battle, and collect. *Please bring money if you would like to purchase snacks.*

DAYS	DATE	TIME
Fri.	6/13	6:45-8:30 p.m.
Location	Mall of America; 60 E Broadway Bloomington, MN 55425	
Age	18+	
FEE	\$18 resident / \$20 non-resident	

IAP2: SALSA DEL SOUL CONCERT IN THE PARK



Enjoy live Latin music under the summer sky at Golden Valley's Concert in the Park. *Bring money if you would like to purchase snacks.*

DAYS	DATE	TIME
Mon.	7/28	6:30-8:00 p.m.
Location	Brookview Park; 200 Brookview Pkwy. N Golden Valley, MN 55426	
Age	18+	
FEE	\$10 resident / \$11 non-resident	

IAP3: SEA LIFE



Get up close with sea creatures, walk through the ocean tunnel, and experience marine magic. *Please bring money if you would like to purchase snacks or souvenirs.*

DAYS	DATE	TIME
Thu.	8/28	6:30-8:00 p.m.
Location	Mall of America: East, Level 1; 60 E Broadway Bloomington, MN 55425	
Age	18+	
FEE	\$28 resident / \$29 non-resident	



THERAPEUTIC PROGRAMS

Reach is approved to bill ILS therapies for Recreation, Music and Art Therapy. Please contact us if you'd like to bill your waiver. Out-of-pocket payments are also accepted.

RT: SPORTS SAMPLER



Try out a variety of sports in our Sports Sampler class. From basketball to soccer and more, you'll build skills, stay active, and have fun in a supportive, inclusive environment. All abilities are welcome—come play and discover your new favorite sport!

DAYS	DATE	TIME
Thu.	7/17-8/7	10:30-11:30 a.m.
Location	Plymouth Community Center; 14800 34th Ave. N Plymouth, MN 55447	
Age	18+	
FEE	\$163.20	



RT: MONDAY FUNDAY



This daytime program offers opportunities for social connection and exercise with peers. We'll do a new activity each week including Bingo, Charades, crafts, workouts, and nature-based activities.

DAYS	DATE	TIME
Mon.	8/4-8/25	2:30-4:00 p.m.
Location	Reach for Resources; 5900 Green Oak Dr., Suite 303 Minnetonka, MN 55343	
Age	18+	
FEE	\$244.80	



RT: DANCE WORKOUT



Get ready to move, groove and sweat with our dynamic dance workout program! Follow along with our energetic instructor in a series of fun and engaging dance routines that will help you burn calories, boost your fitness, and unleash your inner dancer. You can join in person or virtually via Teams. (No class on July 4th.)

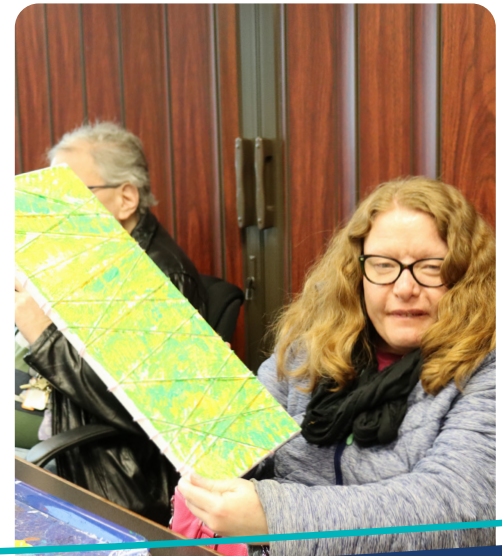
DAYS	DATE	TIME
Fri.	7/11-8/1	10:30-11:30 a.m.
Location	Plymouth Community Center; Studio 2A; 14800 34th Ave. N Plymouth, MN 55447 OR Microsoft Teams (virtual)	
Age	18+	
FEE	\$163.20	

RT: SMALL GROUP PAINTING



This small group class is designed to provide a safe and supportive space for you to express yourself through painting. You can explore your emotions, build self-esteem, and develop new coping skills in a therapeutic setting while creating a new project each week.

DAYS	DATE	TIME
Wed.	6/18-7/9	2:30-4:00 p.m.
Location	Reach for Resources; 5900 Green Oak Dr., Suite 303 Minnetonka, MN 55343	
Age	18+	
FEE	\$244.80	



THERAPEUTIC MUSIC PROGRAMS

Reach is approved to bill ILS therapies for Music Therapy. Please contact us if you'd like to bill your waiver. Out-of-pocket payments are also accepted.

RT: YOUTH MUSIC THERAPY



This youth-focused group, led by a board certified music therapist, welcomes all skill levels. It provides a supportive space for young participants to express themselves, build social connections, and boost their mood through the power of music!

DAYS	DATE	TIME
Tue.	6/10-8/26	4:30-5:00 p.m.
Location	Reach for Resources; 5900 Green Oak Dr., Suite 303 Minnetonka, MN 55343	
Age	9-13	
FEE	\$340	

RT: TEEN MUSIC THERAPY



This teen-focused group, led by a board certified music therapist, welcomes all skill levels. It provides a supportive space for teen participants to express themselves, build social connections, and boost their mood through the power of music!

DAYS	DATE	TIME
Tue.	6/10-8/26	3:30-4:15 p.m.
Location	Reach for Resources; 5900 Green Oak Dr., Suite 303 Minnetonka, MN 55343	
Age	14-17	
FEE	\$340	

RT: ADULT MUSIC THERAPY



This adult-focused group, led by a board certified music therapist, welcomes all skill levels. It provides a supportive space for adult participants to express themselves, build social connections, and boost their mood through the power of music!

DAYS	DATE	TIME
Wed.	6/11-8/27	10:00-10:45 a.m.
Location	Reach for Resources; 5900 Green Oak Dr., Suite 303 Minnetonka, MN 55343	
Age	18+	
FEE	\$340	

Trail by Reach Transportation

Trail by Reach is our transportation service for adults with developmental disabilities living in:

BLOOMINGTON • EDEN PRAIRIE • EDINA • GOLDEN VALLEY • RICHFIELD • ST. LOUIS PARK

We offer convenient and affordable transportation to recreation, leisure, and educational programs hosted by Adaptive Recreation & Learning Exchange (AR&LE) and Reach in these designated cities.

Enjoy round-trip rides for just \$2!

To qualify to be a Trail rider, an individual must be 21 years or older and live independently or semi-independently in: Bloomington, Eden Prairie, Edina, Golden Valley, Richfield, or St. Louis Park.



Learn More & Register!
reachforresources.org/Trail

Questions?
Jill Squires, Transportation Manager
612-401-6395
TRAIL@reachforresources.org



ON THE TOWN: ALL ABILITIES

This community-based social program is for adults and young adults who want to explore their community. Companions are welcomed and an intake meeting is not required.

Age: 18+



OTTA1: EDINA ART FAIR T

Stroll through one of the top art fairs in the Midwest. Explore unique artwork, enjoy live entertainment, and experience creative talent from all over. *Bring money if you would like to purchase any snacks or art.*

DAYS	DATE	TIME
Fri.	6/6	6:30-8:00 p.m.
Location	3911 W 50th St. Edina, MN 55424	
Age	18+	
FEE	\$10 resident / \$11 non-resident	

OTTA2: ICE CREAM SOCIAL T

Cool off with a sweet treat! Join us for a fun and relaxing ice cream social, perfect for enjoying good company and your favorite flavors. In case of rain, please wear a rain jacket. If there is severe weather, this program will be canceled.

DAYS	DATE	TIME
Mon.	6/23	5:30-7:00 p.m.
Location	Reach for Resources; 5900 Green Oak Dr., Suite 303 Minnetonka, MN 55343	
Age	18+	
FEE	\$10 resident / \$11 non-resident	



OTTA3: COMO ZOO

Visit the beloved Como Zoo and see amazing animals up close! From playful primates to majestic big cats, there's something for everyone to enjoy. *Please bring money if you would like to purchase any snacks or gift shop items.*

DAYS	DATE	TIME
Mon.	7/7	4:30-6:00 p.m.
Location	Como Zoo; 1225 Estabrook Dr. St. Paul, MN 55103	
Age	18+	
FEE	\$10 resident / \$11 non-resident	



OTTA4: MUSEUM TOUR

Step into history and culture with a guided museum tour. Discover fascinating exhibits, learn something new, and take in the art and stories of the past. *Please bring money if you would like to purchase any snacks or gift shop items.*

DAYS	DATE	TIME
Thu.	8/7	5:30-8:00 p.m.
Location	MN History Center; 345 W Kellogg Blvd. St. Paul, MN 55102	
Age	18+	
FEE	\$24 resident / \$25 non-resident / \$15 companion	

OTTA5: WABASHA STREET CAVES

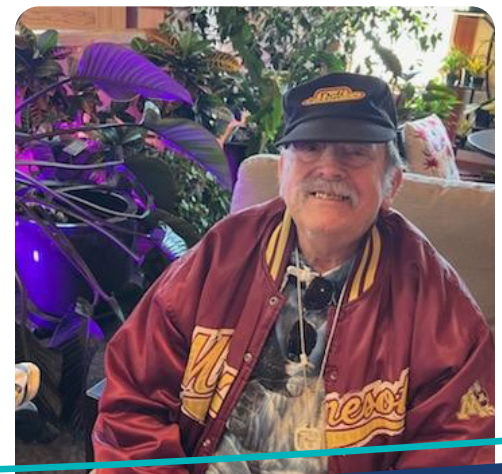
Uncover the hidden history of St. Paul. Take a guided tour of the Wabasha Street Caves and hear thrilling stories of gangsters, speakeasies, and more. In case of severe weather, the tour will be rescheduled.

DAYS	DATE	TIME
Sat.	8/16	2:00-3:00 p.m.
Location	Wabasha Street Caves; 215 Wabasha St. S St. Paul, MN 55107	
Age	18+	
FEE	\$16 resident / \$18 non-resident / \$15 companion	

OTTA6: GARDENING T

Get your hands dirty and enjoy the beauty of nature. Learn gardening tips, plant something new, and spend a peaceful day outdoors.

DAYS	DATE	TIME
Wed.	8/27	6:30-8:00 p.m.
Location	Louisiana Oaks Park: Pavilion; 3520 Louisiana Ave. S St. Louis Park, MN 55426	
Age	18+	
FEE	\$18 resident / \$20 non-resident / \$15 companion	



WEDNESDAY NIGHT SOCIAL

The goal of this program is to increase community engagement while building social skills, coping skills, and flexibility. Activities include cooking classes, craft nights, professional sports outings, dining experiences, and more! Open to individuals of all abilities, with the option for participants to bring a staff member or caregiver if additional support is needed. You can sign up for the full series (1-8) or choose individual activities.



Age: 18+

Date: Wednesdays, June 18 - August 13 | **Time:** 6:30 - 8:00 p.m. (*unless noted*) | **Fee for ALL the events:** \$69 resident / \$74 non-resident

WNS1: SUMMER KICK-OFF T

Kick off summer with outdoor fun! Play yard games like cornhole, washers, and Jenga while enjoying the warm weather.

DAYS	DATE	TIME
Wed.	6/18	6:30-8:00 p.m.
Location	Louisiana Oaks Park: Pavilion; 3520 Louisiana Ave. S St. Louis Park, MN 55426	
Age	18+	
FEE	\$10 resident / \$11 non-resident	

WNS2: CAT CAFE

Unwind at the Cat Café. Enjoy a cozy drink with playful cats, the purrrrrfect way to relax. *Please bring money for snacks.*

DAYS	DATE	TIME
Wed.	6/25	5:30-7:00 p.m.
Location	The Cafe Meow; 3524 Winnetka Ave. N New Hope, MN 55427	
Age	18+	
FEE	\$12 resident / \$14 non-resident	

WNS3: SWIM AT ELM CREEK

Cool off with an evening swim at Elm Creek. Splash, float, or relax and enjoy the summer vibes with friends.

DAYS	DATE	TIME
Wed.	7/9	5:30-7:00 p.m.
Location	Elm Creek Swimming Pond; 12420 James Deane Pkwy. Maple Grove, MN 55369	
Age	18+	
FEE	\$10 resident / \$11 non-resident	

WNS4: CRAFT NIGHT

Get creative at Craft Night. Paint, design, and enjoy a hands-on project—materials provided, just bring your imagination!

DAYS	DATE	TIME
Wed.	7/16	6:30-8:00 p.m.
Location	Brooklyn Center Community Center: Arts & Crafts Room; 6301 Shingle Creek Pkwy. Brooklyn Center, MN 55430	
Age	18+	
FEE	\$16 resident / \$18 non-resident	

WNS5: BINGO & BROWNIES T

Enjoy bingo with a sweet twist! Play for prizes, then treat yourself to brownies for the perfect fun-filled night.

DAYS	DATE	TIME
Wed.	7/23	6:30-8:00 p.m.
Location	Louisiana Oaks Park: Pavilion; 3520 Louisiana Ave. S St. Louis Park, MN 55426	
Age	18+	
FEE	\$12 resident / \$14 non-resident	

WNS6: EAT AT 5-8 CLUB

Dine at the famous 5-8 Club. Enjoy legendary Juicy Lucy burgers in a cozy setting with friends. *Bring \$15-\$25 to order off the menu.*

DAYS	DATE	TIME
Wed.	7/30	6:30-8:00 p.m.
Location	5-8 Club; 6251 Douglas Ct. N Champlin, MN 55316	
Age	18+	
FEE	\$10 resident / \$11 non-resident	

WNS7: SCAVENGER HUNT T

Get ready for a thrilling scavenger hunt. Team up to solve clues, complete challenges, and find hidden treasures, indoor and outdoor fun awaits.

DAYS	DATE	TIME
Wed.	8/6	6:30-8:00 p.m.
Location	Oak Hill Park: Large Pavilion; 3201 Rhode Island Ave. S St. Louis Park, MN 55426	
Age	18+	
FEE	\$10 resident / \$11 non-resident	

WNS8: COOKING NIGHT

Test your skills at Cooking Night. Cook a delicious meal, learn new techniques, and enjoy your creation. No experience needed, just bring your appetite!

DAYS	DATE	TIME
Wed.	8/13	TBD
Location	TBD	
Age	18+	
FEE	\$18 resident / \$20 non-resident	





5900 Green Oak Drive, Suite 303
Minnetonka, MN 55343
Office: 952-200-3030
Fax: 952-229-4468
info@reachforresources.org
reachforresources.org



Not Interested in the Reach Reader?

Text your first and last name
with "Unsubscribe" to
612-916-4021 or email
info@reachforresources.org.

Non-Profit
U.S. Postage
PAID
Twin Cities, MN
Permit No. 594

Friends & Family event

CELEBRATE 40 YEARS OF REACH AT OUR FRIENDS & FAMILY EVENT!

A fun, free event filled with community, connection, and celebration!

What to Expect:

- Reconnect with friends, family, Reach staff, volunteers, and supporters
- Enjoy complimentary snacks & grab a drink from LTD's great selection
- 20% of all sales (including gift cards & merch) will support Reach!
- Reach Presentation at 5:00 p.m. highlighting our work and impact
- Special Moment: 2025 Reach Award Ceremony at 6:00 p.m.

Let's come together to celebrate 40 years of impact! RSVP today to help us plan for plenty of appetizers. We can't wait to see you there!

Monday, June 16
4:00 – 8:00 p.m.
LTD Brewing in Hopkins

*Scan to
RSVP*



REGISTRATION FORM — SUMMER 2025



Name: _____ Pronouns: _____ Birth Date: _____

Address: _____

City: _____ State: _____ Zip: _____

Phone: _____ Email: _____

Emergency Contact Name: _____ Emergency Phone: _____

Allergies/Diet/Accessibility: _____

Race/Ethnicity: ☐ American Indian/Alaska Native ☐ Asian ☐ Black/African American ☐ Hispanic/Latino/a ☐ Middle Eastern/North African ☐ Native Hawaiian/Pacific Islander ☐ White/Caucasian ☐ Other (optional)

Am I a "Resident"?

Our adaptive recreation program is a cooperative effort with the below cities. If you live in another city, please pay the non-resident fee.

- Brooklyn Center
- Chanhassen
- Golden Valley
- Maple Grove
- St. Louis Park
- Brooklyn Park
- Edina
- Inver Grove Heights
- Plymouth

Cooking & Crafts (page 7)		Resident/Non-Resident
<input type="checkbox"/>	Cooking Night - Summer Salads: 6/6	\$25 / \$27
<input type="checkbox"/>	Cooking Night - Cheeseburger Hotdish: 8/18	\$25 / \$27
<input type="checkbox"/>	Craft - Water Gun Painting: 7/10	\$15 / \$17 / \$10 companion # of Companions _____ <input type="checkbox"/> Need Trail Ride
<input type="checkbox"/>	Craft - Sharpie Mugs: 6/10	\$15 / \$17 / \$10 companion # of Companions _____
<input type="checkbox"/>	Craft - Galaxy Jar: 8/8	\$18 / \$20 / \$13 companion # of Companions _____ <input type="checkbox"/> Need Trail Ride
<input type="checkbox"/>	Art Abilities: Starts 7/10	FREE

Games & Movies (page 9)		Resident/Non-Resident
<input type="checkbox"/>	Snacks & Cinema - The Proposal: 8/14	\$10
<input type="checkbox"/>	Bingo (1): 6/9	\$10 <input type="checkbox"/> Need Trail Ride
<input type="checkbox"/>	Bingo (2): 7/21	\$10 <input type="checkbox"/> Need Trail Ride
<input type="checkbox"/>	Bingo & Pizza (1): 6/30	\$18 / \$20 / \$9 companion # of Companions _____ <input type="checkbox"/> Need Trail Ride
<input type="checkbox"/>	Bingo & Pizza (2): 8/21	\$18 / \$20 / \$9 companion # of Companions _____

Social Activities (page 10)		Resident/Non-Resident
<input type="checkbox"/>	Bowling Banquet: 8/26	\$21 / \$23 / \$14 companion # of Companions _____
<input type="checkbox"/>	Hiking Club: Starts 8/5	\$36 / \$40 <input type="checkbox"/> Need Trail Ride
<input type="checkbox"/>	Social Seekers: Starts 6/26	\$200 / \$210 <input type="checkbox"/> Need Trail Ride
<input type="checkbox"/>	Karaoke & Mocktails: 8/11	\$10 / \$11 <input type="checkbox"/> Need Trail Ride
<input type="checkbox"/>	Neon Glow Dance: 6/19	\$10 <input type="checkbox"/> Need Trail Ride

Sports & Recreation (page 8)		Resident/Non-Resident
<input type="checkbox"/>	Bowling - Park Tavern: Starts 6/17	\$84 / \$93 <input type="checkbox"/> Lane Bumpers <input type="checkbox"/> Bowling Ramp <input type="checkbox"/> Need Trail Ride
<input type="checkbox"/>	Bocce League: TBD	\$32 / \$36
<input type="checkbox"/>	Accessible Softball League: TBD	\$48 / \$56 Shirt Size _____
<input type="checkbox"/>	Non-Competitive Soccer: TBD	\$48 / \$56
<input type="checkbox"/>	Let's Go Fishing: TBD	<input type="checkbox"/> Notify Me
<input type="checkbox"/>	MN Twins Game: 5/20	\$26 # of Companions _____

Teen Explorers (page 11)		Resident/Non-Resident
<input type="checkbox"/>	TE1 - Birdhouses: 6/16	\$15 / \$17 <input type="checkbox"/> Need Trail Ride
<input type="checkbox"/>	TE2 - Dining at Perkins: 7/17	\$10 / \$11 <input type="checkbox"/> Need Trail Ride
<input type="checkbox"/>	TE3 - Fishing: 8/20	\$10 / \$11

	Wednesday Night Social (WNS) - Age 18+	Resident/Non-Resident
<input type="checkbox"/>	Wednesday Night Social - ALL Programs	\$69 / \$74
<input type="checkbox"/>	WNS1 - Summer Kick-Off: 6/18	\$10 / \$11 <input type="checkbox"/> Need Trail Ride
<input type="checkbox"/>	WNS2 - Cat Cafe: 6/25	\$12 / \$14
<input type="checkbox"/>	WNS3 - Swim at Elm Creek: 7/9	\$10 / \$11
<input type="checkbox"/>	WNS4 - Craft Night: 7/16	\$16 / \$18
<input type="checkbox"/>	WNS5 - Bingo & Brownies: 7/23	\$12 / \$14 <input type="checkbox"/> Need Trail Ride
<input type="checkbox"/>	WNS6 - Eat at 5-8 Club: 7/30	\$10 / \$11
<input type="checkbox"/>	WNS7 - Scavenger Hunt: 8/6	\$10 / \$11 <input type="checkbox"/> Need Trail Ride
<input type="checkbox"/>	WNS8 - Cooking Night: 8/13	\$18 / \$20

PHOTO WAIVER

To photograph this participant for use in the agency's publicity by using printed material, photographs, videos, website images, photo displays, newsletters, TV, radio, Internet, brochures and social networking media.

Can be photographed: Yes ☐ No ☐

First name can be used: Yes ☐ No ☐

Program Total:	\$
Donation to Reach <i>(Optional):</i>	\$
Total Enclosed:	\$

☐ Cash ☐ Waiver ☐ Check # _____

☐ Credit Card # _____

Expiration Date: _____ Security Code: _____

Name on Card: _____

Billing Address (if different than registration address): _____

Sign here to acknowledge that you have read and understood the Program Policies and you agree to be bound by them. Participants and/or caregivers or guardians can sign.

Participant Signature: _____

Caregiver or Guardian: _____

Please send completed form with payment to:
 Reach for Resources
 5900 Green Oak Drive, Suite 303
 Minnetonka, MN 55343
 Fax: 952-229-4468 • info@reachforresources.org
Online registration: reach.recdesk.com

	Independent Adult Program (IAP) - Age 18+	Resident/Non-Resident
<input type="checkbox"/>	IAP1 - Pokémon Go: 6/13	\$18 / \$20 <input type="checkbox"/> Need Trail Ride
<input type="checkbox"/>	IAP2 - Concert In the Park: 7/28	\$10 / \$11 <input type="checkbox"/> Need Trail Ride
<input type="checkbox"/>	IAP3 - Sea Life: 8/28	\$28 / \$29 <input type="checkbox"/> Need Trail Ride
<input type="checkbox"/>	Check this box to receive a booking link for an IAP intake.	

	Therapeutic Programs	Resident/Non-Resident
<input type="checkbox"/>	RT - Dance Workout: Starts 7/11	\$163.20 <input type="checkbox"/> In Person <input type="checkbox"/> Virtual <input type="checkbox"/> Bill My Waiver
<input type="checkbox"/>	RT - Monday Funday: Starts 8/4	\$244.80 <input type="checkbox"/> Bill My Waiver <input type="checkbox"/> Need Trail Ride
<input type="checkbox"/>	RT - Sports Sampler: Starts 7/17	\$163.20 <input type="checkbox"/> Bill My Waiver
<input type="checkbox"/>	RT - Small Group Painting: Starts 6/18	\$244.80 <input type="checkbox"/> Bill My Waiver <input type="checkbox"/> Need Trail Ride
<input type="checkbox"/>	RT - Adult Music Therapy: Starts 6/11	\$340 <input type="checkbox"/> Bill My Waiver <input type="checkbox"/> Need Trail Ride
<input type="checkbox"/>	RT - Teen Music Therapy: Starts 6/10	\$340 <input type="checkbox"/> Bill My Waiver
<input type="checkbox"/>	RT - Youth Music Therapy: Starts 6/10	\$340 <input type="checkbox"/> Bill My Waiver

	On The Town: All Abilities (OTTA) - Age 18+	Resident/Non-Resident
<input type="checkbox"/>	OTTA1 - Edina Art Fair: 6/6	\$10 / \$11 <input type="checkbox"/> Need Trail Ride
<input type="checkbox"/>	OTTA2 - Ice Cream Social: 6/23	\$10 / \$11 <input type="checkbox"/> Need Trail Ride
<input type="checkbox"/>	OTTA3 - Como Zoo: 7/7	\$10 / \$11
<input type="checkbox"/>	OTTA4 - Museum Tour: 8/7	\$24 / \$25 / \$15 companion # of Companions _____
<input type="checkbox"/>	OTTA5 - Wabasha Street Caves: 8/16	\$16 / \$18 / \$15 companion # of Companions _____
<input type="checkbox"/>	OTTA6 - Gardening: 8/27	\$18 / \$20 / \$15 companion # of Companions _____ <input type="checkbox"/> Need Trail Ride

	Friends & Family Event	Resident/Non-Resident
<input type="checkbox"/>	Friends & Family Event: 6/16	FREE # of Companions _____ <input type="checkbox"/> Need Trail Ride

	Reach for Resources Advisory Board
<input type="checkbox"/>	Check this box if you wish to be contacted about joining our Advisory Board.

Digital Newsletter Sign Up

Subscribe to our monthly email newsletter.

Name: _____

Email: _____